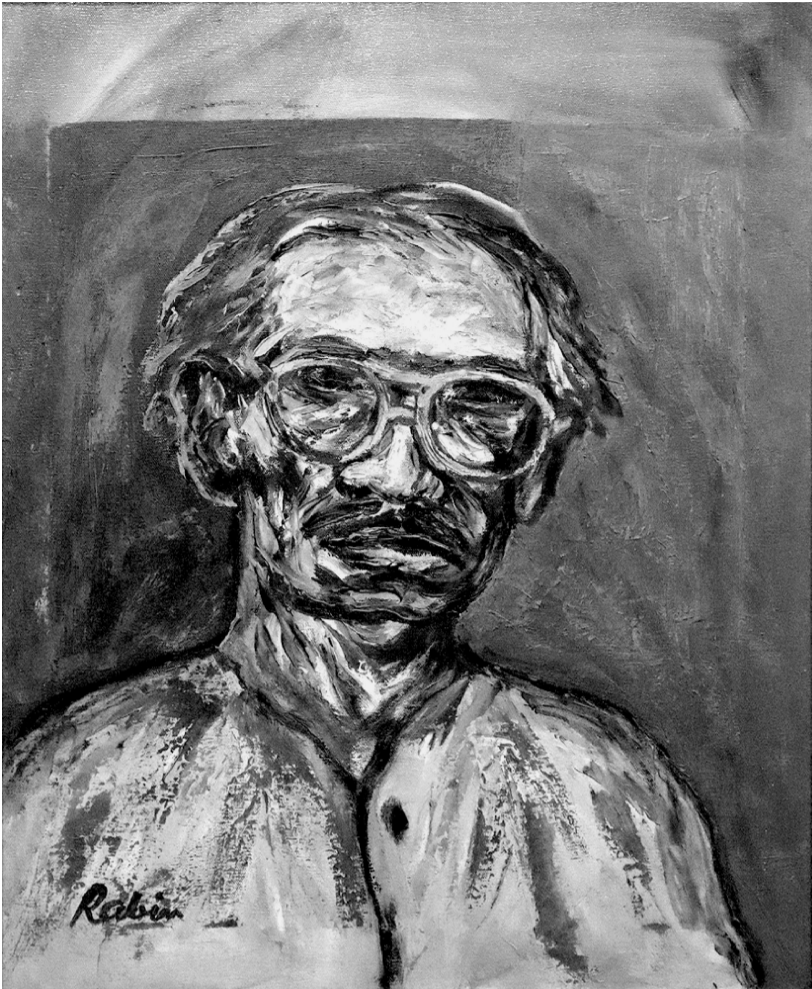


# DEEP SCRATCHES



Rabin Mondal (1929-2019) had a distinct visual language, loaded with multiple psychological associations. An acknowledgement of the visual elements of primitivism, as an aesthetic proposition, substantially contributed to his visual register. Thus the marks on the pictorial ground that built the motifs, mostly the human head brought about a raw vitality.

This was indicative of the struggle of the underprivileged for the rudimentaries of life. It seems that the veteran artist referred to his own self while encountering the numerous others at the periphery. The convergence of his endeavours with the toils of the several others goes in building the iconic presence of his protagonists. The motif acquires the status of almost a monument, reflecting the artist's profound sense of empathy for the marginalised.

The body of works in the exhibition, ranging from 1972 to 2017, is representative of the quintessence of the modern master's focus and practice.